

Historic, archived document

Do not assume content reflects current scientific knowledge, policies, or practices.

62.47

11750

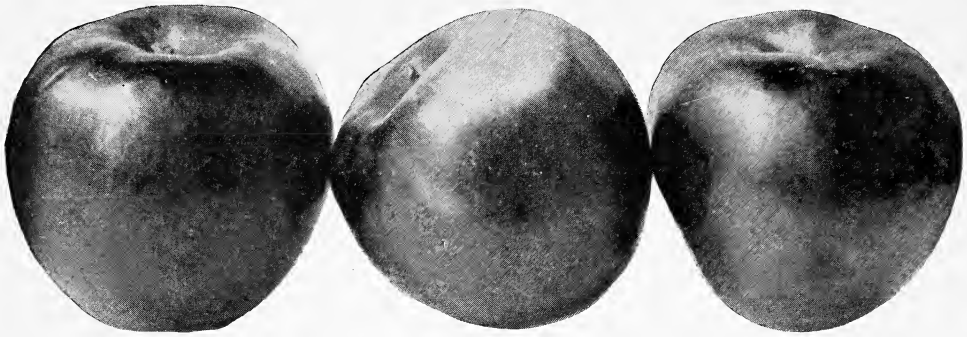
JAN 23 1925

NEW HAVEN NURSERIES

1925 CATALOG



J. Bagby & Sons Company
NEW HAVEN, MISSOURI



The Way We Do Business With You

Terms Cash, unless otherwise agreed upon. All orders to be sent C. O. D. must be accompanied with one-fourth the amount in Cash. Remit by Money Order, Registered Letter, Draft or Check.

Order Early It is important that you order early. For the benefit of customers who wish to order early, but do not care to spare all of the money when the order is sent, we will accept such early orders if 10 per cent of the amount is sent with order. We will reserve the stock for you. Balance to be sent when you order the stock shipped.

Directions for Ordering Write name and address plainly. Always state distinctly the sizes and grades of stock ordered as per the grade given in this list. When named varieties cannot be furnished, we reserve the right to substitute such varieties as will fill the season as near as possible, unless prohibited in the order. Persons unacquainted with the different varieties will generally get a much better selection by leaving the assortment to us. Keep a correct copy of the order, so that when the stock arrives you will know exactly whether you get what you have ordered. If we make mistakes, they are accidental, and we wish to right them.

Prices The prices are for the quantities named, but five, fifty and five hundred will be supplied at ten, hundred and thousand rates respectively—i. e., five at half the price of ten; fifty at half the price of one hundred, and so on.

Packing All goods are packed free. Notwithstanding this fact, we use the utmost care and pack according to the distance and our customers' best interest. Everything is correctly labeled.

Our Guarantee The fact that nurserymen, planters and fruit growers of the country have ordered of us year after year, is as good a guarantee as can be given by any other nursery of over fifty years' standing. But if any mistakes occur we will cheerfully rectify them.

True to Name We use the greatest care possible to have our stock true to name, and should any not prove true, we stand ready to replace it free of charge, or to refund the purchase money, but do not hold ourselves liable for any greater amount than the first cost of stock that may prove not true. We are not responsible for any loss sustained by the purchaser after stock is delivered in good condition.

All shipments of trees will be accompanied by Certificate of Inspection of the State or Government Entomologist. Good stock, true to name, sold direct to the planter at reasonable prices is our aim.

Our Location Our location is the very best for producing well ripened stock with splendid roots. Our facilities for prompt shipments are first-class.

We solicit correspondence and personal inspection of our stock, confident that it will compare favorably with the best.

NEW HAVEN NURSERIES
J. BAGBY & SONS CO.
New Haven, Missouri

NEW HAVEN NURSERIES.

New Haven, Mo., 1/17/25.

To Our Friends and Customers:--

We are enclosing you herewith our Descriptive Price List for Spring 1925. Growing our own stock in large quantities, we believe we are in position to give you better value for your money than any other reliable Nursery establishment. Our varieties are true beyond question, and this fact is worth money to you.

NOTE The LOWEST WHOLESALE PRICES in this List will apply regardless of quantities of each item or variety, on ALL CASH orders, amounting to \$50.00 or more, received before March 1, 1925. Get your neighbors to join you and save money for all.

REMEMBER, WE GUARANTEE SATISFACTION in quality and condition of goods on arrival, and our guarantee means that you can get your money back for unsatisfactory goods reported rejected when received and held for our order. We want you to feel as safe in sending money to us as to your Bank.

DO NOT WAIT TO SEND IN YOUR ORDER. DO IT NOW and be sure of getting just the varieties and sizes that you want. We will not ship out your order until weather conditions are favorable for planting in your locality.

The attention of Commercial Orchardists is invited to our splendid stock of Fruit Trees. They are our own growing, are well ripened, with straight leaders, and splendid root system, and all the leading commercial varieties can be supplied in either one or two year.

The cost of growing and handling high class nursery stock is not less, but please note that prices are lower than at any time since the Great War. The stock we offer is unexcelled in quality and you can secure no better at any price.

Hoping to have your early order which shall have our very best attention for shipment at the proper season, we are,

Yours very truly,

NEW HAVEN NURSERIES.

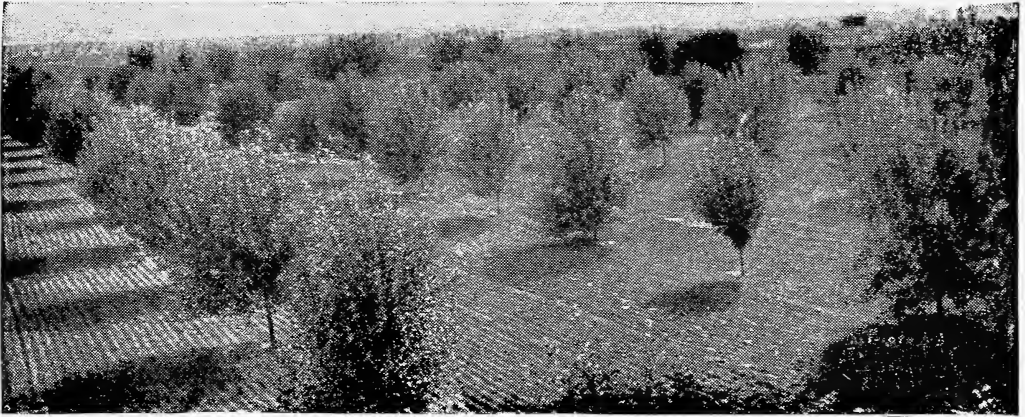
Per C. J. Bagby President.

JUST ABOUT OURSELVES

ALL OF THE TREES we offer are grown right here on our own land and under our own care. We are proud of our record of the orchards that are growing in every state from the trees we have produced. Some of our customers have been with us for more than forty years, and we expect to keep right on serving a larger circle of new customers every year with Bagby quality trees. We make no claims at listing a great number of varieties of every kind of fruit. Neither do we aim to set forth in glowing language the supposed merits of new and untried sorts. This catalog contains only the standard, time-tried and tested varieties, with the descriptions written as accurately and as conscientiously as we know how.

Over fifty years of experience in the nursery business has taught us that our customers like our way of doing business, for they know that we do not exaggerate the merits of our varieties. We produce good stock, true to name, pack it well, ship it promptly and in good condition, and charge only reasonable prices. Let us fill your order.

R. J. BAGBY, President.
J. L. BAGBY, Secretary.



A Money-Making Orchard

“What Shall I Plant?”

So many ask, “What should I plant in my locality?” that we will here name a few of the popular and profitable sorts for general planting.

APPLES

Jonathan, Delicious, Mammoth Black Twig, Gano, York Imperial, Winter Banana, Stayman Winesap, Rome Beauty, Winesap, Grimes' Golden, Maiden Blush, Yellow Transparent. This is our Commercial List. Others would add, perhaps, Ben Davis, Arkansas Black, Missouri Pippin, Duchess of Oldenberg, etc. All of the above are good, profitable sorts, both for home use and market.

PEACHES

If you want to market your fruit, avoid planting too many early sorts. Elberta, J. H. Hale, Carman, Champion, Captain Ede, Heath Cling, Krummel, Gold Dust, Belle Ga. and Crawford are all profitable for market. Should early sorts be desired, Mayflower, Greensboro and Sneed are what you should plant. Plant October Beauty for best late yellow cling. If for home use, plant general assortment, including above, for a succession. The peach tree should have shoots and branches shortened every year or two. The land should be kept in a high state of cultivation.

PEARS

Kieffer and Garber will stay in the lead for profit in the Mississippi Valley states. Duchess, Bartlett, Winter Nells and Anjou can be profitably planted farther west. Koonce is the best early Pear. Seckel is the best mid-summer variety.

CHERRIES

Early Richmond, Dyehouse, Montmorency, Wragg (Sour), Governor Wood, Elton and Magann (Sweet) do very well and are profitable. For general planting we do not recommend the English Morello.

PLUMS

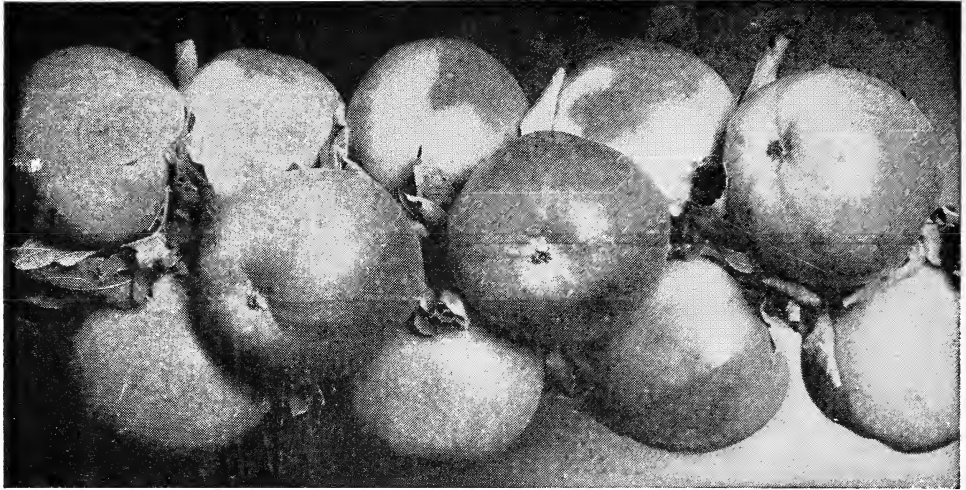
Wild Goose (Native), Common Damson, Shrop Damson, German Prune (European), Abundance, Wickson and Burbank (Japanese), are all good bearers and profitable. We consider the Abundance, Wickson and Burbank the best of the well-known Japanese sorts. **BLACK BEAUTY IS THE BEST OF ALL.**

WHOLE ROOT TREES

All our Apple, Pear, Peach, Plum and Cherry trees are grown on “whole roots.” Our Apples are grafted and planted so that the scion also roots. Don't pay extra prices for “trade marks.” We give our customer the very best, and we don't ask two prices. A trial order will convince you. In planting our trees, you set the best that experienced and skilled labor can produce.

OUR SHIPMENTS

Our shipments for 1924 went to thirty-two states and territories. We are now growing on our premises over one million fruit trees, all clean and healthy; nothing over two years from bud or graft. We do not claim you should plant “Bagby-grown or none at all,” but we do want to impress on you the fact that there are **NONE BETTER.**



Apples

The first fruit, both in importance and general culture, is the Apple. Its period, unlike that of all other fruits, extends nearly or quite through the year. By planting judicious selections of summer, fall and winter sorts, a constant succession of this most desirable fruit will be obtained. Apple planting can never be overdone.

Our apples are all grown on Missouri river upland, on well-branched, whole roots, smooth, clean and well grown in every respect. No better trees can be found anywhere.

	Each	10	100	1000
1-year, 3 to 4 feet, select	\$0.40	\$3.50	\$28.00	\$240.00
2-year, 4 to 5 feet, well branched, first class.....	.45	4.00	32.00	280.00
2-year, 5 to 6 feet, well branched, select.....	.60	5.00	40.00	360.00

Summer Apples

BENONI. One of the best summer sorts. Flesh yellow, tender, pleasant. Core small. Tree vigorous and upright.

CAROLINA RED JUNE. (Red June.) Medium size; red, flesh white; last of June. Tree is very vigorous, upright, an early and abundant bearer.

DUCHESS OF OLDENBERG (Russian). Medium to large size; skin yellow, streaked with red, somewhat blushed. Productive. August.

EARLY HARVEST. Medium to large, bright straw color; flesh white. Tree moderately vigorous and productive. First of July.

LIVELAND RASPBERRY. Fruit good sized, clear, waxy, white striped and marbled crimson; flesh snow white, often tinged pink next to the skin, a very popular early summer variety. Blooms late, is blight resistant, bears early, makes a good filler.

YELLOW TRANSPARENT. This valuable apple is said to be of Russian origin. We find it to be a valuable addition to our list. Medium to large; nearly white.

Fall Apples

MAIDEN'S BLUSH. Rather large, evenly shaded red cheek or blush on a clear pale yellow ground; bears large crops. August and September.

GRIMES' GOLDEN. Medium to large; rich golden yellow; flesh tender, mild, sub-acid. Should be gathered before turning yellow and put in a cool place, and often keeps until February. Tree hardy, vigorous; an early and abundant bearer. October to January.



RAMBO. Medium, streaked with dull red and somewhat dotted, productive and vigorous. Season, September to November.

WEALTHY. An apple of fine appearance and quality, an early and profuse bearer; a good market apple of its season. Tree hardy. Ripens here in August. Winter apple North.

Winter Apples

ARKANSAS BLACK. Origin, Bentonville, Arkansas. The tree is a beautiful, upright grower, young wood very dark. Fruit medium to large; fine flavor; beautiful dark color, almost black; flesh yellowish, slightly subacid, crisp. One of the best cooking apples; vigorous. January to May.

BEN DAVIS. Fruit medium to large, flesh white; an excellent variety. Tree very hardy; a free grower, coming into bearing early and very productive; December to March.

BLACK BEN DAVIS. Ben Davis type. Dark red color.

DELICIOUS. A remarkably popular variety in the West, and rapidly taking first rank both for commercial and home orchards in all the apple growing sections of the country. Fruit large, nearly covered with

dull dark red; fine grained, crisp, juicy; quality best; a splendid keeper and shipper; vigorous grower.

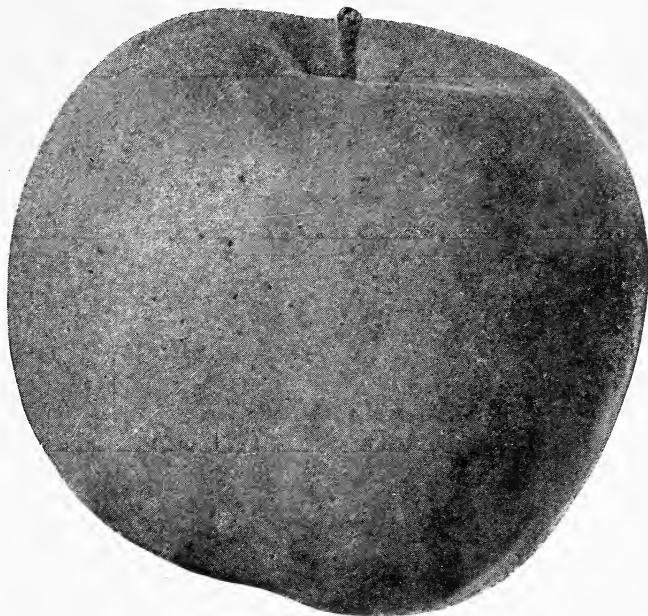
HUNTSMAN'S FAVORITE. Originated in Johnson county, Missouri. Very large; golden yellow, with bright red cheek; nearly sweet, fine flavor, very aromatic. One of the best and highest selling market apples; tree very healthy and productive. November to January.

BALDWIN. Large, rounded; deep bright red over yellow ground; few russet dots, very productive. A great market variety. Very popular. November to February.

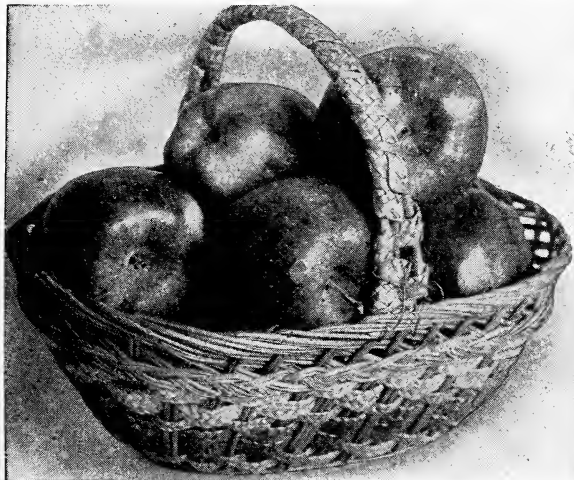
GANO. This apple was introduced to the public in 1886. Tree very hardy; it bears very young. Fruit bright red on yellow ground, no stripes; large; oblong, tapering to the eye; surface smooth, takes a very high polish, making it valuable as a stand fruit; flesh white. Annual, early, prolific bearer.

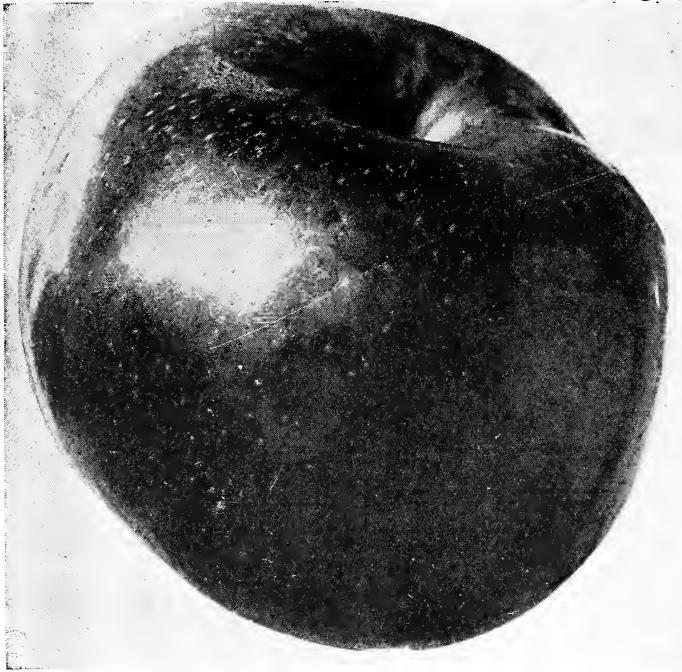
INGRAM. A seedling of the old Janet. Originated near Springfield, Mo. Its habits are similar to the Janet, but the tree is a more upright grower and the apple is not subject to crack. Size medium; striped bright red in the sun; flesh greenish-yellow, agreeable, subacid flavor; a good keeper. Tree hardy, late bloomer; very productive.

JANET (Rawle's Janet). Medium, roundish, greenish-yellow, striped with red; rich and juicy, one of the best and longest keepers in the South and Southwest; valuable for its high quality and its late blooming; moderate grower. January to March.



Plant **JONATHAN, STAYMAN WINESAP, YORK IMPERIAL, GRIMES GOLDEN** for Market.





Mammoth Black Twig

JONATHAN. Fruit medium, roundish; skin yellow, nearly covered with dark or lively red; moderate grower. One of the best apples for home use or market, as it is a delicious dessert apple that always commands the highest market price. October to January.

MAMMOTH BLACK TWIG. Supposed to be a seedling of the Winesap, but tree a better grower and fruit much larger; or, in other words, an improved Winesap. Tree a fine, upright spreading grower.

MISSOURI PIPPIN. Large, oblong, bright red with numerous gray dots; very handsome, fair quality, an early and very abundant bearer. December to March.

MINKLER. Bright red cheek. One of the very best late keepers. Seedling of Little Red Romanite.

ROME BEAUTY. Large, yellow shaded with red; tender, juicy, sub-acid. October to February.

STAYMAN WINESAP. Not quite so well colored as Winesap, but larger; splendid quality; a good keeper. Valuable for market or home use. A vigorous grower and adapts itself readily to different soils and conditions.

TALMAN SWEET. Of medium size, pale yellow, slightly tinged with red; firm, rich, sweet. The most valuable apple for baking; keeps well till April.

WINESAP. Medium, dark red; a favorite market variety in the West. November to April.

WOLF RIVER. Very large and handsome; flesh whitish, sub-acid, good bearer. Very handsome and showy. November and December.

WINTER BANANA. Fancy market fruit; large, pale yellow, pink blush. Tree a strong grower.

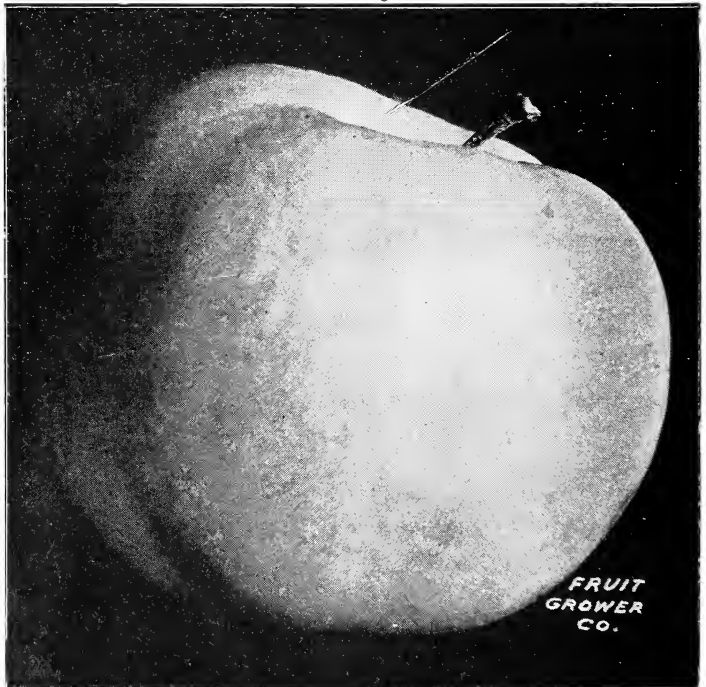
YORK IMPERIAL. This apple has been gaining favor, and is being planted largely in the West as a commercial sort. Large, smooth, yellow, shaded red, with indistinct red stripes.

Crab Apples

TRANSCENDENT. Remarkably vigorous, growing to a good size, and immensely productive. Bears a little the second year from planting, and every year after, and produces good crops by the fourth year. The best of its class for cooking and eating; juicy and crisp. Skin yellow, striped with red. September to October.

WHITNEY. Large, averaging $1\frac{1}{2}$ to 2 in. in diameter; skin smooth, glossy green, splashed with carmine; flesh firm, juicy and rich. Very hardy; vigorous, handsome.

Prices for Crab Apples are the same as for other Apples.





Peaches

We are "Headquarters" for True to Name Peach Trees in the West, and can supply in any quantity—the best up-to-date market sorts. Our Peaches are stocky, nicely headed, smooth, straight bodies, well rooted, on healthy peach stocks and free from any disease and true to name. Remember this when comparing prices with other establishments. Over 100,000 sold and shipped to other nurserymen in 1924.

	Each	10	100	1000
2 to 3 feet, part branched.....	\$0.20	\$2.00	\$15.00	\$140.00
Medium, 2½ to 4 feet, nice, well branched.....	.25	2.25	20.00	180.00
First class, 3½ to 5 feet, nicely headed.....	.40	3.00	25.00	230.00
Extra select, 5 to 6 feet.....	.50	4.00	30.00	250.00

ALEXANDER. Large size, handsome and regular in form, with deep maroon shade; adheres to stone; should remain on the tree until fully ripe. White flesh. Early in July.

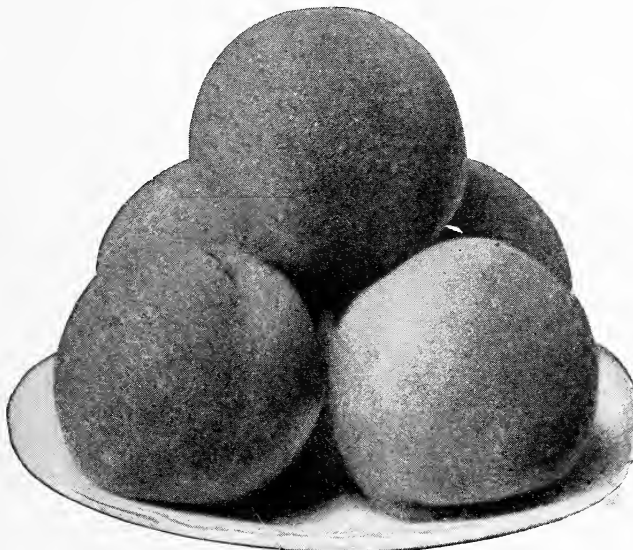
BELLE OF GEORGIA. Very large; skin white with red cheek; flesh white, firm and of excellent flavor. Tree a rapid grower, very prolific; fine shipper. Ripens with Early Crawford.

CARMAN. White flesh, large, with beautifully mottled red cheek. A valuable home or market sort. Season about fourteen days later than Alexander and about three weeks earlier than Elberta. Our stock came from the originator, and is true to name.

CHAMPION. Originated at Nokomis, Illinois. Fruit large, beautiful in appearance; flavor delicious, sweet, rich and juicy; skin creamy-white, with red cheek; freestone. August 15.

CHINESE CLING. The most popular Southern peach; shape is oblong, has creamy skin with faint flashes of red. August.

CRAWFORD'S EARLY. This beautiful yellow peach is highly esteemed for market purposes. Fruit very large, oblong, skin yellow, with fine red cheek; flesh yellow, juicy, sweet and excellent; free. Last of July.



CRAWFORD'S LATE. Fruit of the largest size; skin yellow, or greenish-yellow, with dull red cheek; flesh yellow; productive; one of the best free-stones. August and September.

CROSBY. If you want peaches every year, try some Crosby. It is medium size, rich orange yellow, splashed with red, and of the best quality. Mid-season.

CAPTAIN EDE. Originated on farm of Capt. Ede in Illinois. Splendid yellow free-stone variety. In appearance is very much like Elberta, its equal in every way, except not quite so large; better quality.

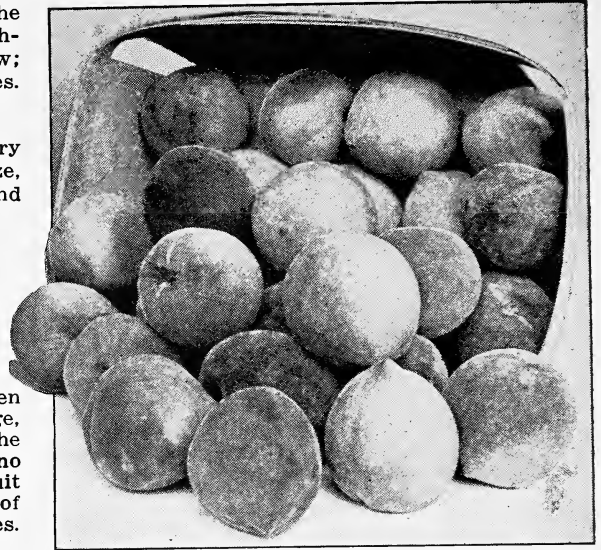
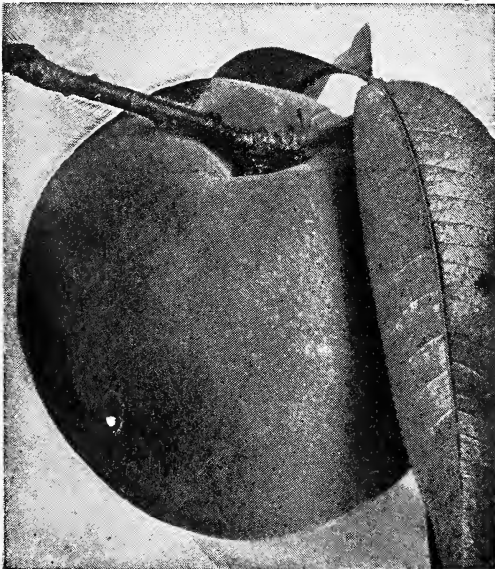
ELBERTA. A Georgia cross between Crawford and Chinese Cling; very large, well colored; all things considered, the finest yellow free-stone in cultivation; no one can go amiss by planting it; the fruit is perfectly free from rot, and is one of the most successful shipping varieties. August and September.

FAMILY FAVORITE. Free, seedling of Chinese Cling, of better color; large, clear, waxy complexion, with blush; prolific, firm; a valuable variety for shipping or drying. Last of July.

FOSTER. Same season as Crawford's Early; much more productive; yellow, with red cheeks; quality best; good size.

FITZGERALD. Of Crawford type. A seedling found at Oakville, Ont., where it stands the winter perfectly; is about as hardy as Elberta; quality first-class; yellow free-stone, and we recommend it.

GREENSBORO. Large, oblong, greenish-yellow shaded red, flesh creamy; among the best; tree vigorous, prolific; grown largely in Georgia and the South for Northern markets. Ripe June 25th.



GOLD DUST. If you want the very best canning variety, this is the peach. Large yellow cling-stone; juicy, productive and of best quality. Season, September 1st to 10th.

J. H. HALE. Ripens about August 20. Yellow, finely colored; large, round, and of excellent quality. Free-stone.

HENRIETTA (Levy). Magnificent yellow cling, large size, slightly covered with bright crimson, hardy, productive, always commands fancy prices. September 25th.

HILEY. Ripens last of July. Yellowish white skin with deep red cheek. Flesh is white and very juicy. Large size. Free-stone.

HEATH CLING. Large, oblong, creamy white, slightly tinged with red in the sun; very tender, juicy, melting; very rich and luscious. September 15th.

KRUMMEL. Ripens September 10 to 25. Skin yellow, overlaid with crimson blush. Free-stone. The fruit is nearly round, quite large. Flesh is fine grained and has a delicious flavor. Krummel grows well in the northern and southern sections.

MILLER CLING. An extra large cling-stone. Hardy, productive, and of best quality. Earlier than Heath Cling, but larger and better color.

MAMIE ROSS. Large, white, almost covered with carmine; flesh white, juicy, and of good quality. One of the best for family use and probably the best early commercial variety. Semi-cling.

MATTHEWS' BEAUTY. Originated in Georgia. A late yellow free-stone. Fully as large as Elberta; two weeks later. A splendid shipper.

MAYFLOWER. A beautiful "red-all-over" peach; handsome and of splendid quality. Extremely early. Tree hardy and healthy.

OCTOBER BEAUTY. A late yellow Cling. Originated on the grounds of Judge Hugo Muench of St. Louis. We recommend it as the best late yellow Cling.

OLD MIXON CLING. Large, white flesh, with deep red cheek; rich and good; one of the best. August.

RINGGOLD CLING. Much larger than Heath, in every way an improvement on that popular kind. A very valuable peach. September.

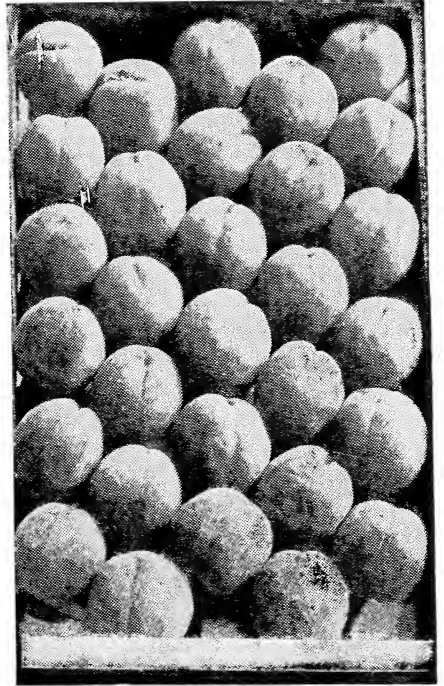
SALWAY. Large, roundish, skin downy, creamy yellow, with a warm, rich, clear crimson red cheek in the sun; flesh deep yellow, stained with red at the stone; juicy, rich, very good. Free-stone. A good market sort. September 15. Hardy.

SNEED. Ripens earlier than Alexander, and belongs to an entirely different type; it is very distinct in tree and fruit, belonging to the Chinese Cling type; size medium; hardy.

STUMP THE WORLD. Very large; roundish; skin white, with a bright red cheek; flesh white; a free-stone. End of August.

TRIUMPH. The earliest yellow peach known; productive, hardy and profitable for market. Originated in Georgia.

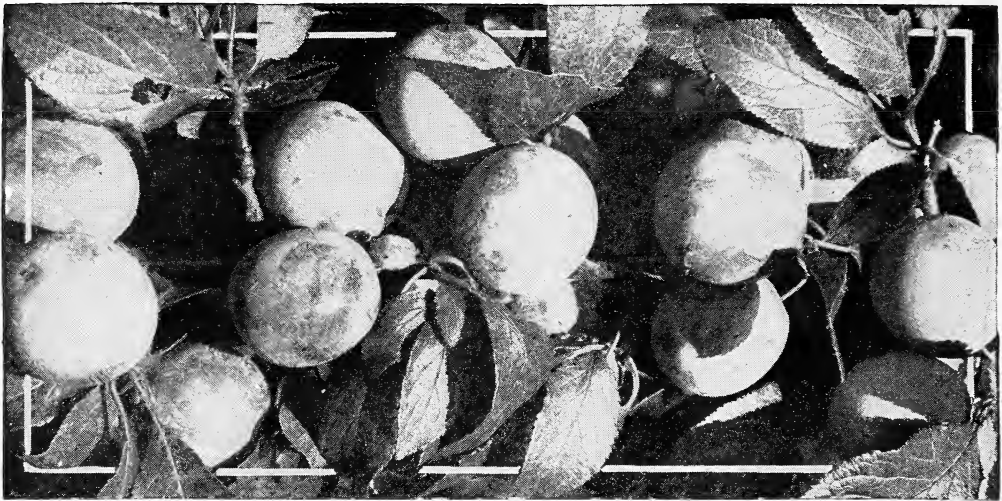
WONDERFUL. Color rich yellow; flesh yellow, highly flavored; firm. Ripens in September. Very similar to the Smock.



We want all our customers to plant **OCTOBER BEAUTY** (Late Yellow Cling) as the **LATEST** and **BEST**. Medium size, high color and quality.



Showing Different Sizes of Peach Trees



Plum Trees

	Each	10	100
First class trees, 5 to 6 feet.....	\$0.90	\$8.00	\$60.00
First class trees, 4 to 5 feet.....	.75	7.00	50.00
First class trees, 3 to 4 feet.....	.60	5.00	40.00

ABUNDANCE. A hardy, productive Japanese sort. Large, purplish red; quality very best. Season, early in July.

BLACK BEAUTY (New). The best Japan sort we have ever grown. Large, very dark purple, almost black. Persimmon shape. Quality and size of Abundance.

BURBANK. Large, varying less in size than the other Japanese plums; it is nearly globular; clear cherry-red, with a thin lilac bloom; flesh deep yellow, firm and meaty; tree vigorous and productive. Last of July.

COMMON DAMSON. Well-known and very productive. Season, September.

COMPASS CHERRY PLUM. Hardy. Fruit when fully ripe, a dark wine color. Sweet, juicy and of very fine flavor. The tree is a regular and heavy bearer and produces fruit the next year after setting out.

GERMAN PRUNE. Very profitable and will succeed wherever Common Damson can be grown. Very large. We consider it the best of European sorts. August and September.

LOMBARD. Medium, oval, violet red; juicy, pleasant and good. Tree vigorous and productive. It is a valuable market variety; one of the most hardy and popular. August.

RED JUNE. One of the largest Japanese varieties; ripening before Abundance. Tree upright, vigorous and hardy.

SHROPSHIRE DAMSON. A plum of fine quality, sprightly. In market it has commanded nearly double the price of the common Damson; enormously productive. Last of September.

WILD GOOSE. Large, rich, crimson, beautiful; flesh soft, melting, delicious, with a full, fruity flavor. Tree a strong grower, prolific.

WICKSON. We regard this as one of the best of the late ripening Japan sorts. Readily parts from the seed. Extra large. Season, August.

For the Home Orchard plant Abundance, Burbank, Black Beauty, Common and Shropshire Damson.

The **BLACK BEAUTY** originated with us, and is a cross between the Damson and Abundance.



Henry Co., Mo., Nov. 23, 1924.

We are sending you some kodak pictures of our Black Beauty plum orchard. These are the finest plums I ever saw. We raised about 150 gallons on six trees last summer, and sold 100 gallons in three days. Could have sold 500 gallons if we had had them.

J. S. HARTLEY.



Pear Trees

Our Pears are especially clean, smooth and well rooted, grown on XX French imported stocks.

	Each	10	100
Leading sorts, first class, 5 to 7 feet, 2-year.....	\$1.00	\$9.00	\$80.00
Leading sorts, 4 to 5 feet, 2-year.....	.80	7.50	70.00
Leading sorts, 3 to 4 feet, 1-year, very fine.....	.70	6.00	50.00

For Kleffer and Garber in quantities of 300 or more, write us for special low prices.

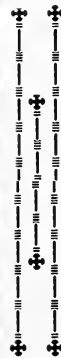
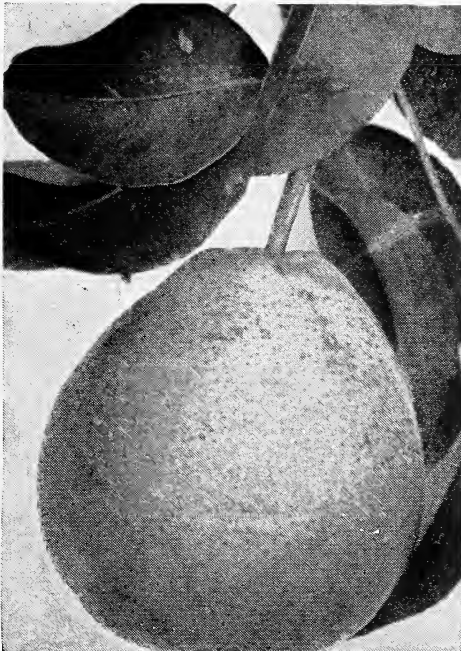
Summer Pears

KOONCE. The handsomest, best and most valuable; very early pear; tree vigorous, upright grower, free from blight; magnificent foliage, which it retains late in the season; fruit medium to large; skin yellow, does not rot at the core, juicy, sweet. Is an excellent shipper.

BARTLETT. Large, skin very thin, clear lemon-yellow, with soft blush on the sunny side; flesh white, buttery, very juicy and highly flavored. The best summer pear in existence for quality.

CLAPP'S FAVORITE. Large, pale lemon-yellow, marbled with crimson on the sunny side and thickly sprinkled with brown dots; flesh finely grained and melting with a rich vinous flavor. August.

ANJOU. One of the most delicious late fall pears; juicy and of excellent quality.



Autumn Pears

DUCHESS. Very large, greenish-yellow; sometimes a little russeted; makes a beautiful tree. One of the best. October and November.

GARBER. Originated in Pennsylvania. Fruit is large and beautiful; color bright yellow, with red; juicy and good; delicious canned.

FLEMISH BEAUTY. Large, beautiful, juicy, melting, rich and fine; strong grower and good bearer; hardy everywhere. September and October.

KIEFFER. Tree a remarkable grower, with so vigorous a constitution that it rarely blights. Fruit of fine size, rich color and good quality. Bring high prices in competition with other varieties. Best when picked at maturity and house-ripened. October and November.



Cherries

There are few more desirable fruits than Cherries, and they can be grown for market with great profit. Along the street or avenue as ornamentals, especially the Heart and Biggarreau varieties are strong, vigorous growers, with large, glossy leaves and open, spreading heads, making a fine shade. Cherries thrive in almost any well drained soil. The fruit is equally delicious whether eaten from the tree or preserved, and it will always find a ready market at profitable prices.

Our Cherry trees are all budded on Imported French Mahaleb and Mazzard stock. They have fine roots and nice heads. All well rooted and will be graded full size indicated, and up.

	Each	10	100
Leading sorts, extra select, 2-year, 4½ to 6 feet.....	\$1.25	\$10.00	\$90.00
Leading sorts, first-class, 2-year, 3½ to 5 feet.....	1.00	9.00	75.00
Leading sorts, first-class, 1-year, 3 to 4 feet.....	.80	7.00	60.00
Leading sorts, well branched, 1-year, 2 to 3 feet.....	.70	6.00	50.00

DYEHOUSE. Very early and sure bearer. Ripens before Early Richmond; but not quite as productive. May.

ENGLISH MORELLO. Medium to large, blackish-red; acid; juicy. Very productive. Short lived. July.

EARLY RICHMOND (Kentish Virginian or Early May). Medium size; red; melting, juicy, sprightly, acid flavor. This is one of the most valuable and popular of the acid cherries, and is exceedingly productive. First of June.

GOV. WOOD. One of the best sweet cherries; very large, light red, juicy, rich and delicious. Tree healthy and a great bearer. May and June.

MONTMORENCY. No doubt one of the finest acid cherries; tree very hardy and an immense bearer; commences to fruit while young and is loaded annually thereafter with fine crops; fruit of good size; fine flavor, and

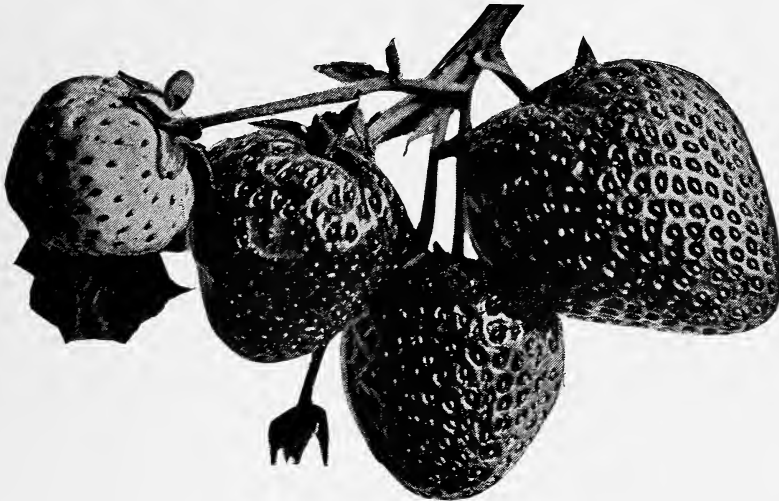
of bright clear shining red; valuable everywhere, especially for Northern latitudes; larger than Early Richmond, and fully ten days later. Season, end of June.

MAGANN CHERRY. A new sweet cherry. Fruit large, almost black when fully ripe, growing in large clusters. It will pay you to include some of these in your order for other stock.

OSTHEIMER. Largest size, very dark; flesh tender, juicy. Late June.

WRAGG. Originated in Iowa. Medium to large in size, long stem, dark purple when fully ripe. A variety well adapted for the high altitude and prairie regions of the Northwest.

For Middle West we suggest as best commercial sorts in cherry—Richmond, Montmorency, Magann. For larger assortment include Dyehouse, Wragg, English Morello, Governor Wood.



Senator Dunlap Strawberries

Strawberry Plants

Prices of Strawberry Plants, for spring shipment only: Selected plants, \$1.25 per 100; by Parcel Post Prepaid.

Large orders must be sent by express. Small orders carry safely by mail. They do not carry well by freight.

AROMA. (Per.) Plants large, very vigorous and perfectly healthy. Makes plants just right for a good fruiting row. The blossom is rich in pollen, a good fertilizer for Sample, Bubach and Enormous. Fruit large to very large, roundish, conical, smooth and perfect in form, of a beautiful bright glossy red in color, very firm, and of excellent quality. Will give splendid results on any soil that will grow a good crop of corn or potatoes. It is nearly as late as Gandy, of long season. Three times as productive and a sure cropper every year. During the past five years the demand for plants of this variety has been very heavy and we have never been able to grow plants enough to meet this demand.

SENATOR DUNLAP. (Per.) A well-tested, wonderfully productive variety, one of the safe sorts to plant everywhere and sure to take a high place among the prominent standard sorts. Plant resembles Warfield, rampant runner, should be restricted in its production of plants; fully equal to Crescent and Warfield in its ability to succeed under all circumstances. Fruit good size, regular form, beautiful bright red, glossy, firm, splendid keeper and shipper, excellent quality. One of the best for canning; ripens early and continues a long time. It promises to stand at the head in its wonderful ability to ripen a good crop, under almost any condition of drought or neglect.

PRICE LIST OF FRUIT AND ORNAMENTALS

Apricots

	Each	10	100
Leading sorts, 4 to 6 feet, extra select.....	\$0.80	\$7.00	\$60.00
Leading sorts, 3 to 4 feet, first class.....	.60	5.00	40.00
Early Golden, Peach, Moorpark, Royal, Superb.			

Quinces

	Each	10
Leading sorts, 3 to 4 feet, 2-years, extra select.....	\$1.00	\$9.00
Champlon, Orange.		

Mulberries

	Each	10
New Everbearing (best), 4 to 6 feet.....	\$0.70	\$6.00
Downing, 4 to 5 feet.....	.70	6.00
Russian, 4 to 6 feet.....	.40	3.50
Tea's Weeping—Nothing better for lawn, 2-year heads.....	1.50	12.00

Nut Trees

	Each	10
Butternuts, 3 to 4 feet.....	\$0.60	\$5.00
Chestnuts, American Sweet, 4 to 6 feet.....	.60	5.00
Pecans, 2 feet, 2-years, from selected seed (Seedlings).....	.70	6.00



Grape Vines

	Each	10	100
Brighton, 1-year, No. 1 Red, rich sweet.....	\$0.20	\$1.75	\$12.00
Catawba, 1-year, No. 1, Late Red.....	.20	1.50	10.00
Concord, 1-year, No. 1, Black.....	.20	1.50	8.00
Delaware, 1-year, No. 1, Red.....	.20	1.75	12.00
Empire State, 1-year, No. 1, White.....	.25	2.00	15.00
Goethe, 1-year, No. 1, Yellow Green.....	.25	2.00	18.00
Ives' Seedling, 1-year, No. 1, Black.....	.20	1.75	12.00
Moore's Early, 1-year, No. 1, Black.....	.30	2.00	15.00
Niagara, 1-year, No. 1, White.....	.25	1.50	12.00
Norton's Virginia, 1-year, No. 1, Black.....	.35	3.00	28.00
Pocklington, 1-year, No. 1, White Yellow.....	.25	2.00	15.00
Worden, 1-year, No. 1, Black.....	.25	1.50	12.00

Raspberries

	10	100
Gregg, Black	\$0.50	\$3.00
Kansas, Black50	3.00
Marlboro, Miller, Cardinal, Red50	4.00
Cumberland, Black50	3.00

Blackberries

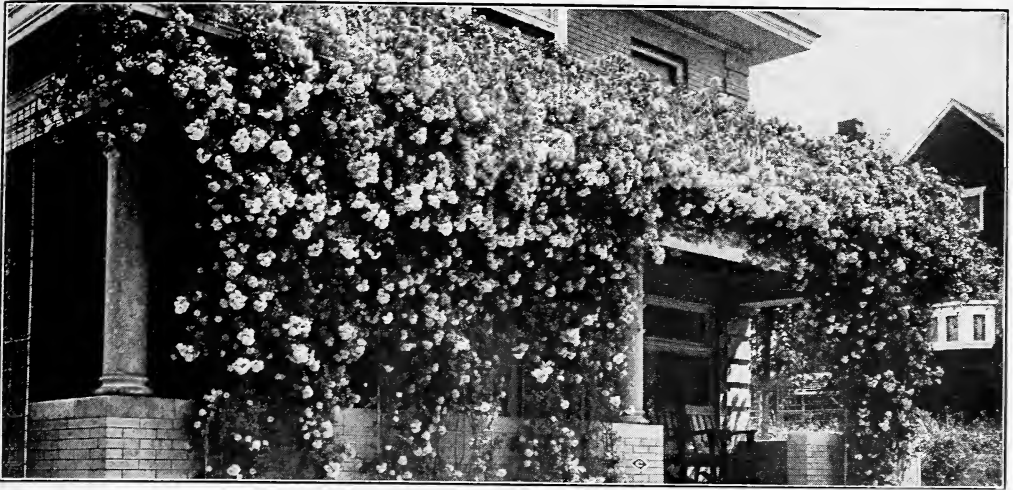
	10	100
Snyder	\$0.60	\$4.00
Early Harvest, McDonald60	4.00
Mercereau60	5.00
Dewberry—Austin, Lucretia60	4.00

Currants

	Each	10
Red Dutch Cherry, 2-years.....	\$0.25	\$2.00
White Dutch, 2-years25	2.00
Versailles, 2-years25	2.00
Fay's Prolific, 2-years25	2.00

Gooseberries

	Each	10	100
Downing, 2-years, No. 1.....	\$0.25	\$2.00	\$16.00
Houghton, 2-years, No. 1.....	.25	2.00	16.00



Roses

	Each	10
Hybrid Perpetuals and Teas, 2-year, extra.....	\$0.60	\$5.00
Varieties:		
Columbia, H. T. Pink.		
Etoile de Lyon, H. T. Sulphur Yellow.		
Kaiserin Auguste Victoria, H. T. Pure White.		
Helen Gould, H. T. Watermelon-Red.		
Maman Cochet, H. T. Pink.		
Mrs. Arthur C. Waddell, H. T. Salmon.		
Ophelia, H. T. Salmon.		
Paul Neyron, H. P., Deep Rose.		
Premier, H. T., Deep Rose.		
White Maman Cochet, H. T., White tinged with Blush.		
Climbing, 2-years, extra, Dorothy Perkins50	4.00
Climbing, 2-years, extra, Crimson Rambler50	4.00
Moss, 2-years and extra, 1-year50
Baby Rambler, Crimson60	5.00

Ornamentals

	Each	10	100
California Privet, 2-year, No. 1, 2 to 3 ft., extra heavy.....	\$0.10	\$0.80	\$ 7.00
California Privet, 1-year, No. 1, 15 to 24 in., first class.....	.08	.60	5.00
Calycanthus, 2 to 3 feet, first class.....	.30	2.50	20.00
Catalpa, 6 to 8 feet.....	.50	4.00	25.00
Catalpa Bungei (Umbrella Catalpa)—Grafted on stems 5 to 6 feet high, it makes an umbrella-shaped top without pruning. Perfectly hardy, and flourishes in all soils and climates	1.50	12.00	110.00
Althea—Assorted50	4.00
Hydrangea, 2 to 3 feet, first class.....	.60	5.00
Snowballs, 3 to 4 feet.....	.50	4.00
Spirea, Van Houtti, 2 to 3 feet, makes beautiful hardy hedge	.30	2.50	20.00
Tulip Tree, 6 to 8 feet.....	1.00	8.00
Weeping Mulberry	1.50	12.00

Rhubarb

	Each	10	100
Myatt's Linneaus	\$0.20	\$ 1.50	\$ 10.00



General Information

Over fifty-two years have been spent in building up our nursery business here at New Haven. It was established in 1872 by Julian Bagby, the father of the present management. In 1892, the business was incorporated and since that date has been under the management of R. J. and J. L. Bagby, ably assisted by men in our employ. These employees have grown up in the business and are honored citizens in the community. We state this fact that our customers may know that their orders are handled by responsible men.

We own over four hundred acres of land, on which we grow our trees. This land has a value of over fifty thousand dollars. This information is given that you may know that we are responsible. We want you to feel as safe in dealing with us as you do with your bank.

About Agents

We are not employing traveling salesmen to solicit orders, but we shall be pleased to have you get a club among your neighbors, and on club orders amounting to \$100.00 or more, at single, ten or 100 rates, as may apply on each order, we allow you 10 per cent additional in stock. We put up each order in a separate package, so that upon receipt of goods you have only to hand out the different lots as ordered. Many of our best customers buy in large quantities at the lowest rates and distribute in lots as ordered by their neighbors.

We also desire to sell to nurserymen and dealers who buy to sell again, and special prices will be made on carloads or larger quantities than indicated in this list.

References

Some of our correspondents have asked us to give them bank references, and we hereby comply, and refer to local banks and to the commercial agencies. We do our local business with Farmers' Savings Bank, New Haven, Mo.

Distances for Planting

Standard Apples	30 feet apart each way
Standard Pears and Strong-growing Cherries.....	20 feet apart each way
Duke and Morello Cherries.....	18 feet apart each way
Standard Plums, Apricots.....	18 to 20 feet apart each way
Peaches, Nectarines	18 to 20 feet apart each way
Dwarf Pears	10 to 20 feet apart each way
Grapes	rows 10 to 16 feet apart, 7 to 16 feet in rows
Currants and Gooseberries.....	3 to 4 feet apart
Raspberries and Blackberries.....	3 to 4 by 5 to 7 feet apart
Strawberries for field culture.....	1 to 1½ by 3 to 4 feet apart
Strawberries for garden culture.....	1 to 2 feet apart

Number of Trees on an Acre

30 feet apart each way.....	50
25 feet apart each way.....	70
20 feet apart each way.....	110
18 feet apart each way.....	135
15 feet apart each way.....	205

Rule—Multiply the distance in feet between the rows by the distance the plants are apart in the rows, and the product will be the number of square feet for each plant or hill; which, divided into the number of square feet in an acre (43,560) will give the number of plants or trees to the acre.

A Few Words From Our Customers

Niagara County, N. Y., Oct. 2, 1924.

Your trees are giving entire satisfaction. We have a block of twenty acres just bearing their first crop and the varieties are just as represented to a tree. It is a great satisfaction to have such trees.

HENRY LUTTS & SON.

Elbert County, Ga., Feb. 27, 1923.

Am in receipt of my little shipment and I want to congratulate you on your thorough method of packing. I was very much pleased with the plants. Want to thank you for the extra tree.

T. J. MERCER.

Dickens County, Texas, Mar. 22, 1923.

The trees came in perfect condition and I assure you it is a pleasure to receive such stock as I believe they were as near perfect as any trees I ever bought.

J. E. JOHNSON.

Franklin County, Ill., Feb. 13, 1923.

Last year I purchased 500 peach trees from you. The trees were good stock and grew very well considering the dry weather. I did not lose exceeding ten trees.

M. C. INGRAM.

Middlesex County, Mass., April 16, 1923.

Stock arrived in good condition. They are sturdy trees with good root system.

GEORGE HEMINGWAY.

Montgomery County, Ill., April 16, 1924.

I received order of trees, and was well pleased with them. Everyone who has seen them, say they are the best trees they ever saw.

J. A. ARNOLD.

Gasconade County, Mo., April 19, 1924.

Trees and plants arrived in good condition. I thank you for promptness.

C. E. VAUGHN.

Utah County, Utah, March 13, 1924.

Trees came through in good condition and are the usual New Haven type.

B. H. BOWER.

Cole County, Mo., April 2, 1924.

Please find enclosed check for trees recently received. Trees were very good, best I have seen or ever got from anywhere.

M. R. BUERSMEYER.

Madison County, Iowa, April 6, 1923.

I received the trees you sent by express in due time. I never saw a bunch of trees packed as good as those.

J. W. ROSEMAN.

Montezuma Co., Colo., Jan. 26, 1923.

Last fall you sold me 200 fruit trees. The trees reached me in good shape and I want to thank you for the way you handled the order.

F. H. TAYLOR.

Howard County, Mo., Nov. 27, 1923.

Enclosed find check—to cover your invoice of trees of the 22nd inst. Trees arrived in fine shape and are certainly a fine lot. Am well pleased with them.

H. M. KINGSBURY.

Peoria County, Ill., March 26, 1924.

I received my Umbrella Catalpa yesterday. The trees are first-class and I am well pleased. I will remember you in the future if I need any more.

H. B. BRUNINGA.

DeWitt County, Ill., April 1, 1924.

The trees, etc., arrived yesterday. All in fine condition. I never saw as nice a lot of peach trees from any nursery in my life.

C. N. COX.

Cole County, Mo., Sept. 19, 1924.

We had fine luck with the trees purchased from you last spring. We have only two dead ones out of 526 and many of the trees have made as much as four feet of new growth. We are proud of our orchard start.

A. KAUFFMAN.

Butler County, Mo., March 24, 1924.

I received the fruit trees in fine condition. I am well pleased with the appearance of them.

J. L. HENDRIX.

St. Louis County, Mo., Sept. 1, 1924.

Must write you in regard to the 200 peach trees I bought of you last Fall. I set them out last fall under ideal weather conditions, and they have done fine this summer and made a splendid growth. I lost only two trees out of the 200.

WM. KRIEGER.

Pulaski County, Mo., March 30, 1924.

Trees received and they are in excellent condition and are a good lot of trees. I want you to know I am well pleased.

H. L. VEASMAN.

Scott County, Mo., Nov. 22, 1924.

The trees ordered by the Schererville Peach Club arrived last Monday. Everyone was well pleased with the quality of goods obtained. The man who got the big variety of peach trees called me last night and stated that all varieties were there and the exact counts in every case. We appreciate the good treatment you have given our club.

A. J. RENNER.

Hillsborough County, N. H., May 8, 1924.

Trees arrived in splendid condition. You have a wonderful packer. I never received trees packed so carefully. I am well pleased. Trees are all healthy and well grown. Every tree you sent me last year is alive. I will try to send you a worth while order next year.

JAS. A. WARNER.

Fayette County, Pa.

My order for trees received in good condition and am pleased to say they are bigger and nicer trees than I expected and the best I ever received from any nursery, regardless of price. I shall certainly favor you with any orders I may need in the future.

H. J. BRITTON.

Certificate of Nursery Inspection

University of Missouri Agricultural Experiment Station,
Columbia, Mo., Aug. 13, 1924.

This is to certify that, in accordance with the Nursery Inspection Act, passed by the Forty-seventh General Assembly, the nursery stock of the New Haven Nurseries, Nursery grown at New Haven, Franklin County, Mo., was inspected on July 11, 1924, by a duly authorized inspector, and found apparently free from dangerously injurious insects or plant diseases.

LEONARD HASEMAN,
Entomologist and Chief Inspector.

Spraying

Spraying is a vital necessity if money is to be made from fruit. It doesn't pay to miss one season, even if enemies are not visible. Spraying has an invigorating effect on trees, besides controlling enemies.

There are three classes of enemies spraying will control—chewing insects, sucking insects, and fungi. Each class requires a different remedy, but the remedies can be combined most of the time.

Spraying during the dormant period is distinctly different from spraying on foliage. Materials several times as strong can be used and are needed to control the scales.

On account of the life-habits of enemies, often only two to seven days are available for any one spraying. Do the work then. Put the material on with force and cover every inch of bark and leaf.

Get a sprayer that is big enough, that will give one hundred to two hundred and fifty pounds of air pressure, that is adapted to your land and trees, and that is durable. Get a power outfit, if possible, for it does better work than a hand-pump can.

The spraying programme ordinarily resolves itself into two, three or four applications—one while trees are dormant, with lime-sulphur solution, and the others on blossoms and fruit with self-boiled lime-sulphur, or diluted lime-sulphur, with arsenate of lead added, or maybe with Bordeaux and lead. All applications must be guided by careful study.

Borers will attack fruit trees in spite of all we can do, and will kill many trees if left alone. Trees must be gone over several times each year, and should be gone over each April and August.

We Grow Our Own Stock

We mail this list of prices to our friends and customers, and will ask that they favor us with their orders as early as practicable. We have now growing in our nurseries over one million fruit trees by actual count. All clean and healthy. ENTOMOLOGIST'S CERTIFICATE WITH EACH SHIPMENT.

Shipments to Pacific Coast and Southern States from our frost-proof storage during winter months via Southern Routes.

WE ARE GROWERS OF WHAT WE SELL, having over 400 acres devoted exclusively to the nursery business. Many nurserymen are simply jobbers in the trade, and cannot sell stock with the same certainty of being true to name and free from disease.

New Haven Nurseries
New Haven, Missouri

YOU ORDER THE TREES—WE DO THE REST

PLANTING AND PRUNING

Care of Stock The bundles should be opened, the roots dipped in water, then heeled in moist ground so that the melow earth will come in contact with the roots and thoroughly protect them from the air, having the earth tramped solid about them. When ready to plant, take up only a few at a time, puddle the roots and do not allow them to lie exposed to the sun or air. The ground should be carefully prepared by deep plowing and firming down with a disc and harrow.

Planting The holes for planting must be large enough to receive the roots freely, without cramping or bending them from their natural position. All broken or mutilated portions of the roots must be cut off so as to leave the ends smooth and sound. All trees should be planted about as they stood in the nursery row; **pack the soil very firmly about the roots**, being careful not to bark or break the roots. Leave three inches of the surface soil loose to serve as a mulch. If the ground is very dry apply one or two pails of water before this soil mulch is in place, and after the water has soaked away it can then be placed over the moist soil.

Pruning When Planted All fruit trees require more or less pruning when planted, and thereafter from year to year. On Apple, Pear and Cherry remove unnecessary branches and cut back growth of remaining branches to insure good growth the first season. On Plum and Peach remove branches to within one inch of body of tree and cut back the top leader to the desired height for a new head. The usual rule with Peach and Plum is to prune to rough stick form as above to about three feet in height. The above instructions on pruning are for freshly planted trees only.

Mulching Unless thorough surface cultivation will be practiced during the summer a mulch should be applied. This may be a layer of coarse manure or vegetable matter around the trees three to six inches deep, and extending out from the trees three or five feet. Mulching protects the soil against the sun and drying winds; against alternate freezing and thawing, and provides some plant food.

Shrubs If planted in beds or groups the ground should be spaded deeply and well worked. If shrubs are set as individual specimens they should be planted the same as trees.

Hedges **Privet**—Dig trench about twelve inches deep and set the plants two to three inches deeper than they stood in the nursery row, or deep enough so the lower branches will be partly under the ground. Such planting will make a compact hedge down to the ground line, but if the plants are set too shallow there will always be undesirable open spaces at the base of the hedge. Privet and Spirea can be set about nine inches apart in the row.

Treatment of Nursery Stock That Has Been Frozen in the Packages or Received During Freezing Weather.

Place the package UNOPENED in a cellar or some such place, that is COOL but free from frost, until completely thawed. DON'T be in a hurry to open. The stock can remain in the packages for TWO WEEKS OR LONGER if necessary, without injury. If boxes are covered with sawdust, earth or something to exclude the air, it will be better.

After the FROST is ALL OUT the stock can be opened up and treated as above.

NEW HAVEN NURSERIES, New Haven, Mo.
J. BAGBY & SONS COMPANY



Black Beauty Plums

It Pays to Plant

BAGBY GROWN FRUIT TREES

They Grow and Bear True To Name

WHEN you buy Fruit Trees, you want the best that can be produced. Bagby grown trees have been on the market for over fifty years. When you buy them you are getting the best money can purchase, and you know what the crop will be. Our varieties are correct, our grades full and all culls go on the brush pile. High quality and **ABSOLUTE SATISFACTION GUARANTEED**, with a record of over fifty years square dealing to back the guarantee.

NEW HAVEN NURSERIES, New Haven, Missouri

J. BAGBY & SONS COMPANY

Bagby Trees are full of Vitality because Grown Right. They Bring Results.